



Fullerton College  
Excellence. Elevated.

# *Understanding the transfer student continuum and developing targeted interventions*

Cecilia Arriaza, Transfer Center Director  
Megan Harris, Senior Research & Planning Analyst





Fullerton College  
Excellence. Elevated.

## Presentation Overview

1. Provide context for our project and briefly discuss the Through the Gate Study framework
2. Discuss process behind developing a transfer continuum dashboard
3. View the tableau dashboard
4. Discuss next steps and possible interventions/strategies
  - Application workshop series



Fullerton College  
Excellence. Elevated.

## Campus and statewide initiatives

- Vision for Success, Funding Formula, Guided Pathways, Student Equity
- Need to understand and communicate with the campus community about transfer
- Start with looking at who are our transfer students and where are they in the pipeline then develop interventions



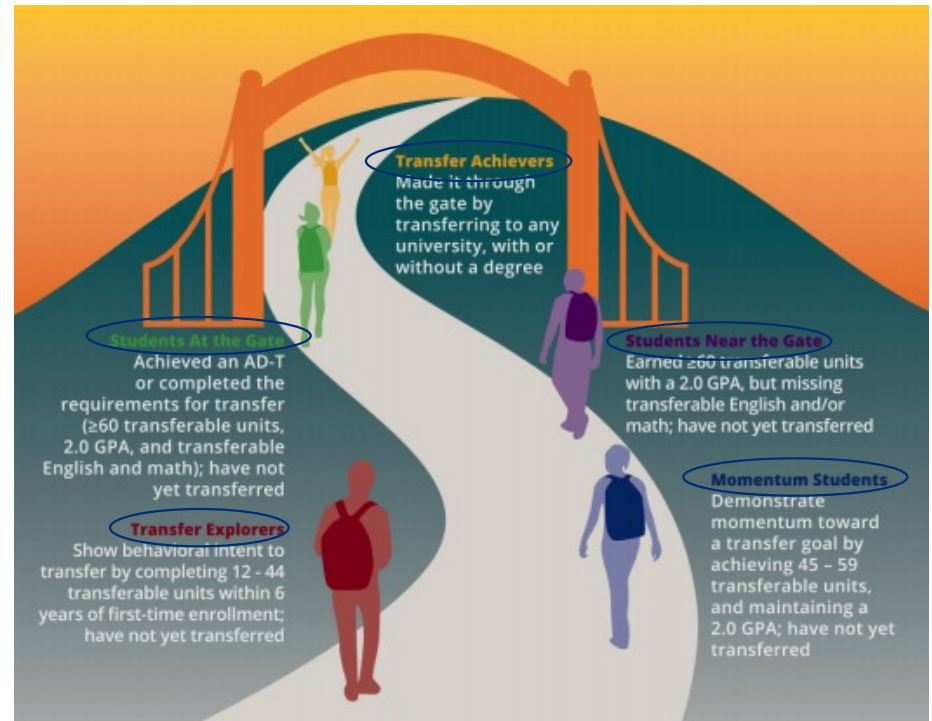
Fullerton College  
Excellence. Elevated.

## Understanding the Through the Gate Framework

### Groups of Students Emerge

## Through The Gate Transfer Study

- Aims to understand transfer as a journey that a diverse and varied group undertake.
- Transfer continuum emerges







Fullerton College  
Excellence. Elevated.

## Understanding the Through the Gate Framework

- Main findings
  - Math is a barrier
  - Gender, race/ethnicity, and region all play a role in students' transfer progress
    - 75% of African Americans who completed transfer requirements made it through the gate; but most African-American students never make it this far
    - Students in the Inland Empire were least likely to make it through the gate
    - Latino males and Native American females were least likely to transfer



Fullerton College  
Excellence. Elevated.

## Understanding the Through the Gate Framework

- Next steps
  - Gathering insights directly from students
  - Exploring why students get stuck
  - Understanding how to help them through the gate



Fullerton College  
Excellence. Elevated.

## Understanding the Through the Gate Framework

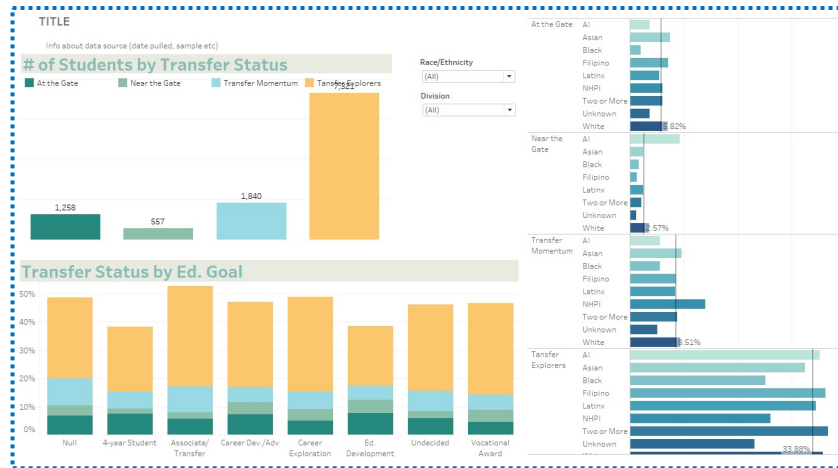
- Limitations and Considerations
  - Behavioral intent
  - Did not distinguish between FT/PT students
  - Access to data
  - Cohort studied entered before implementation of AB 705 and Guided Pathways
  - External factors related to transfer (university admissions)
  - Retrospective view



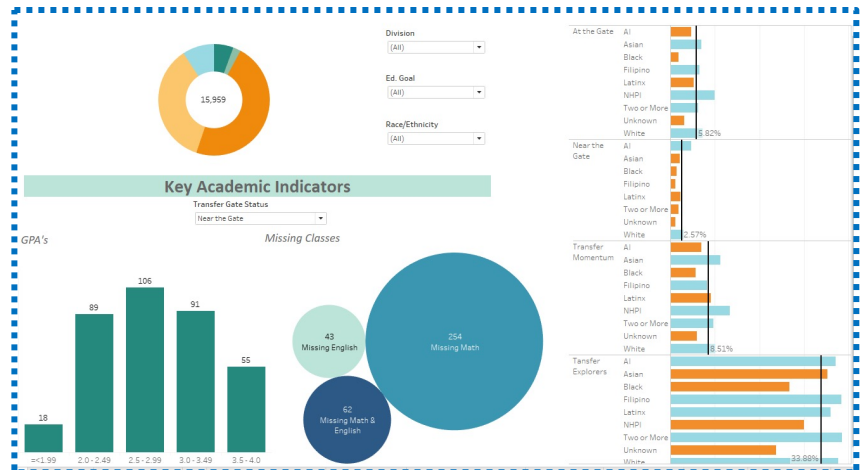
Fullerton College  
Excellence. Elevated.

# Methodology: Dashboard Design

## Round 2 Understanding ALL the Gaps



## Round 1 Equity Focused





Fullerton College  
Excellence. Elevated.

## Deviations from the Framework

### Through The Gate Study

**FOCUS ON “TRANSFER-  
DIRECTED” STUDENTS**

*12+ units within 6 years*



### FC Dashboard

**FOCUS ON UNDERSTANDING  
THE WHOLE STUDENT BODY**

*Ability to filter by Ed. Goal*

**CONSIDERS GPA IN CRITERIA  
IN EACH STAGE**

*Students needed to have a 2.0 or  
greater at each of the 3 middle  
stages*



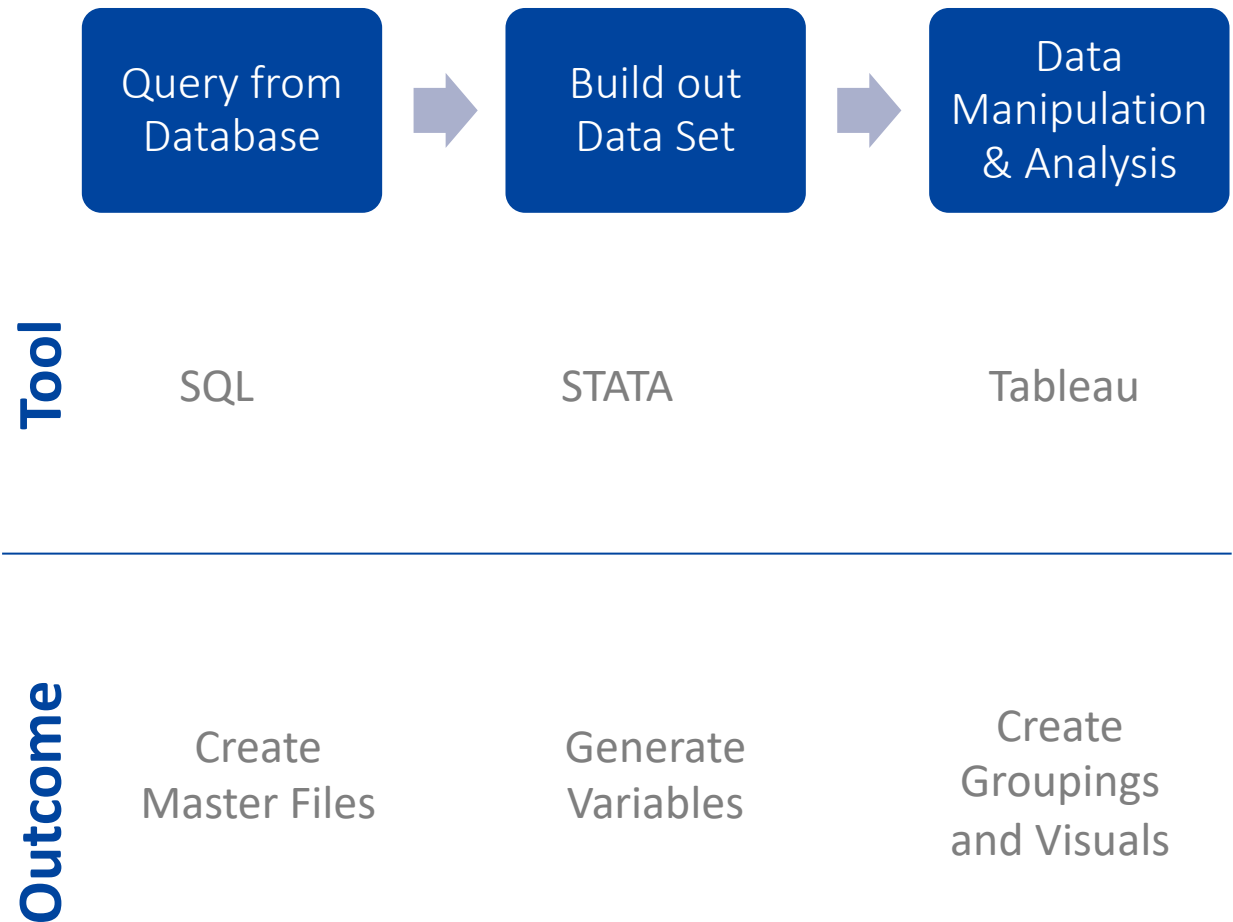
**EXCLUDED GPA CRITERIA**

*Added additional graph to  
understand GPA range of  
students*



Fullerton College  
Excellence. Elevated.

## Methodology: Data Processing





Fullerton College  
Excellence. Elevated.

Transfer Center  
Dashboard

**Final(ish) Version.....**

**.....Something For Everyone**



Fullerton College  
Excellence. Elevated.

## Key findings

- Math is also a barrier for FC students





Fullerton College  
Excellence. Elevated.

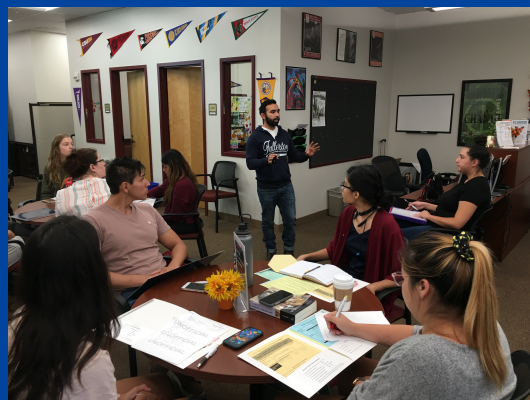
## Interventions

- **Collaboration with special programs**
- **Outreach efforts**
  - Transfer Ambassadors
- **Application workshop series**



Fullerton College  
Excellence. Elevated.

## Application Workshop Series



**Part 1:** Are You Ready to Apply?

**Part 2:** Applying to the

❖ UC   ❖ CSU   ❖ Private and OOS

**Part 3:** After You Apply-The next steps

**Part 4:** Admitted, Waitlisted or Denied?

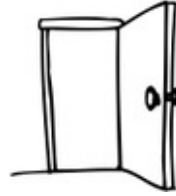
**Part 5:** University Financial Aid Awards &  
Budgeting



Fullerton College  
Excellence. Elevated.

## SUMMER

Part 1:  
Are You Ready to  
Apply?



## Counselor Meeting & Transcript Review

### Discuss Next Steps

- ☐ Meet with Counselor
- ☐ Do research on intended campuses and majors
- ☐ Fill in Academic Record (OCT's & Test Scores)
- ☐ Address outstanding academic renewals or repetition petitions
- ☐ Prepare to apply for TAG



Fullerton College  
Excellence. Elevated.

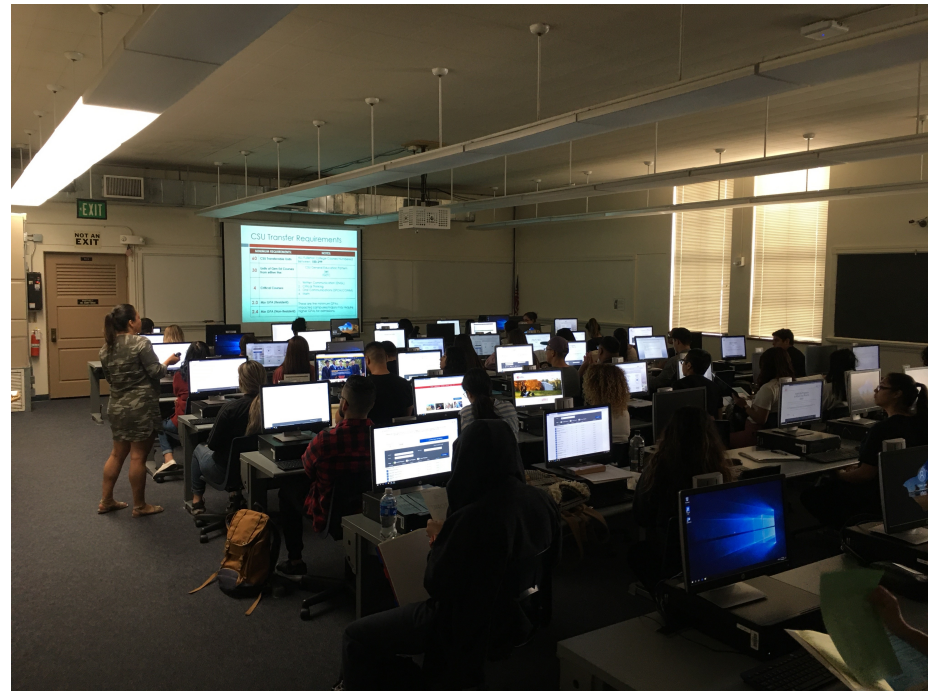
OCT - NOV

Part 2:  
Applying to the  
University

## Content Includes:

Application basics & pitfalls

Opportunity for students to  
start the application and ask  
questions





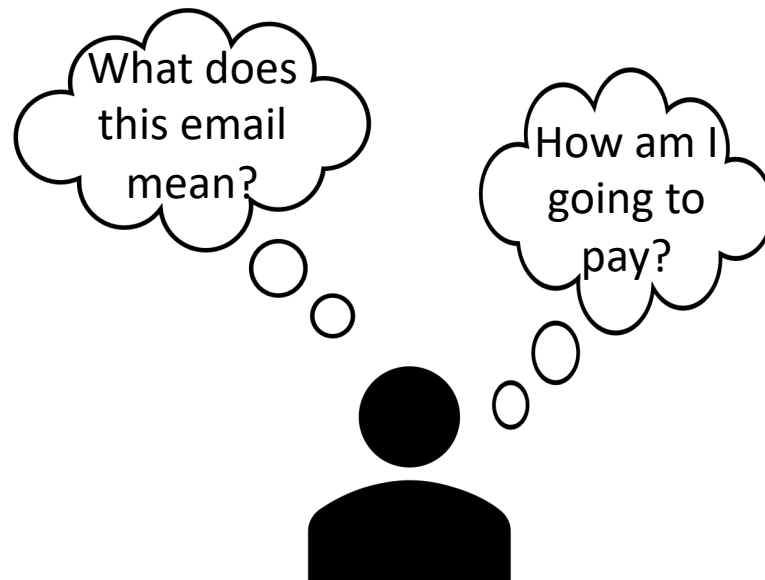
Fullerton College  
Excellence. Elevated.

**JAN - FEB**

Part 3:  
After You Apply:  
The Next Steps

## Content Includes:

General information on post-application process  
Financial Aid and Scholarship Info  
Understanding portals and university communications







Fullerton College  
Excellence. Elevated.

## MAR - APR

### Part 4: Admissions Decisions: Admitted, Waitlisted, or Denied?

## Content Includes:

How to deal with conditional admissions & waitlist decisions  
Appeals Process & University Errors  
Continued support with Financial Aid & Scholarships





Fullerton College  
Excellence. Elevated.

## Part 5:

# University Financial Aid Awards and Budgeting

## Content Includes:

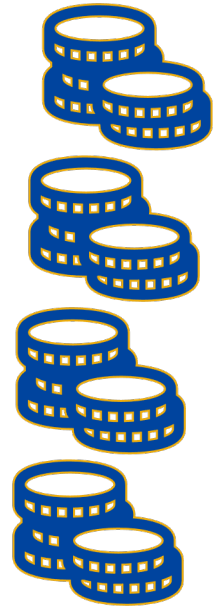
### Understanding Important Terms

- Cost of Attendance
- Estimated Family Contribution (EFC)

### Grants vs. Loans

### Where to view availability of grants

### Importance of Connecting with the Financial Aid Office at selected University





Fullerton College  
Excellence. Elevated.

## On the Horizon- Our next steps

- Study transfer achievers (restrospective view)
- Gather qualitative data (focus groups)
- Success teams/coaches
- Advocate for more transfer center funding and personnel





**Fullerton College**  
Excellence. Elevated.



**Cecilia Arriaza**  
[carriaza@fullcoll.edu](mailto:carriaza@fullcoll.edu)  
(714) 992-7087

**Megan Harris**  
[mharris@fullcoll.edu](mailto:mharris@fullcoll.edu)  
(714) 732-5058